

Please download the client from the following link and follow the installation instructions to begin using the print software. The client needs to be installed on your local system.

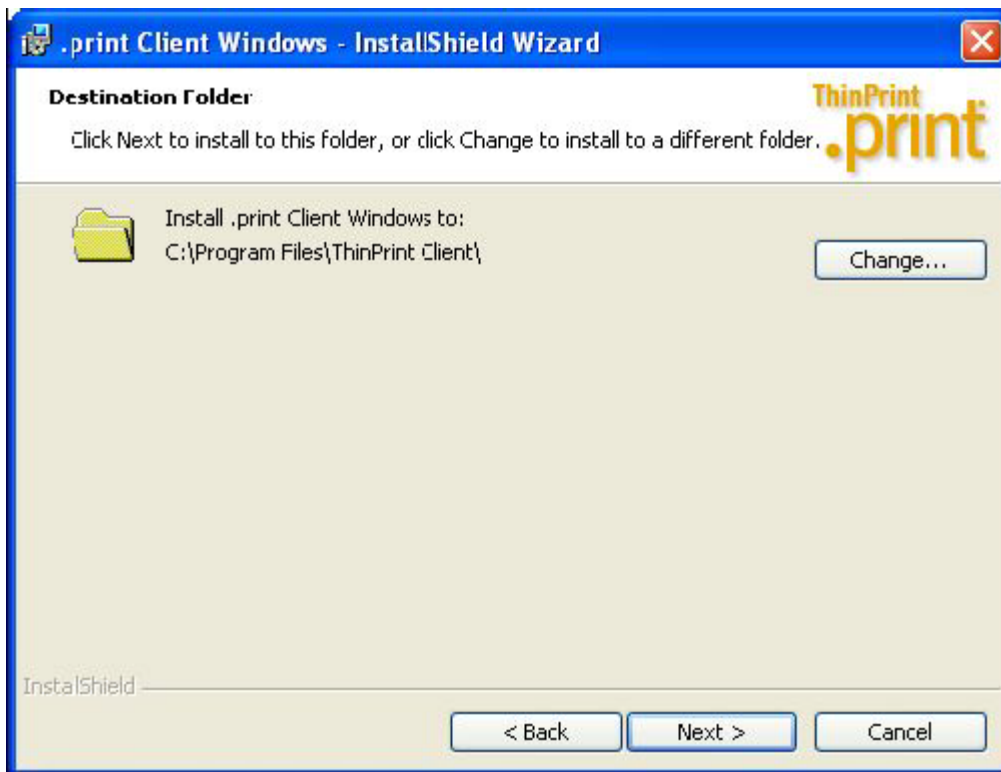
[Windows 9x, ME, NT, 2000, XP, 2003](#)

[Windows Vista](#)

[Windows XP x64, Vista x64](#)

Installation Instructions:

1. Extract the zip file you downloaded
2. Double click on "{OS version}.msi"
3. Following select NEXT
4. Read the License Agreement and select its terms then click NEXT
5. Select the installation path then click NEXT
6. Following select INSTALL
7. Click FINISH to complete the installation.



Once installation is complete, .print Client Windows (RDP) will start. When a Remote Desktop Session is started, its icon appears in the task bar on the local Windows machine

